

Customer :

customer

Customer part :

customer part

Comment :

Comment

S1=8.51

S2=6.75

Tmax=449

Tp S2=488.0

PI=0.56

HI=118

Sample =1768.80

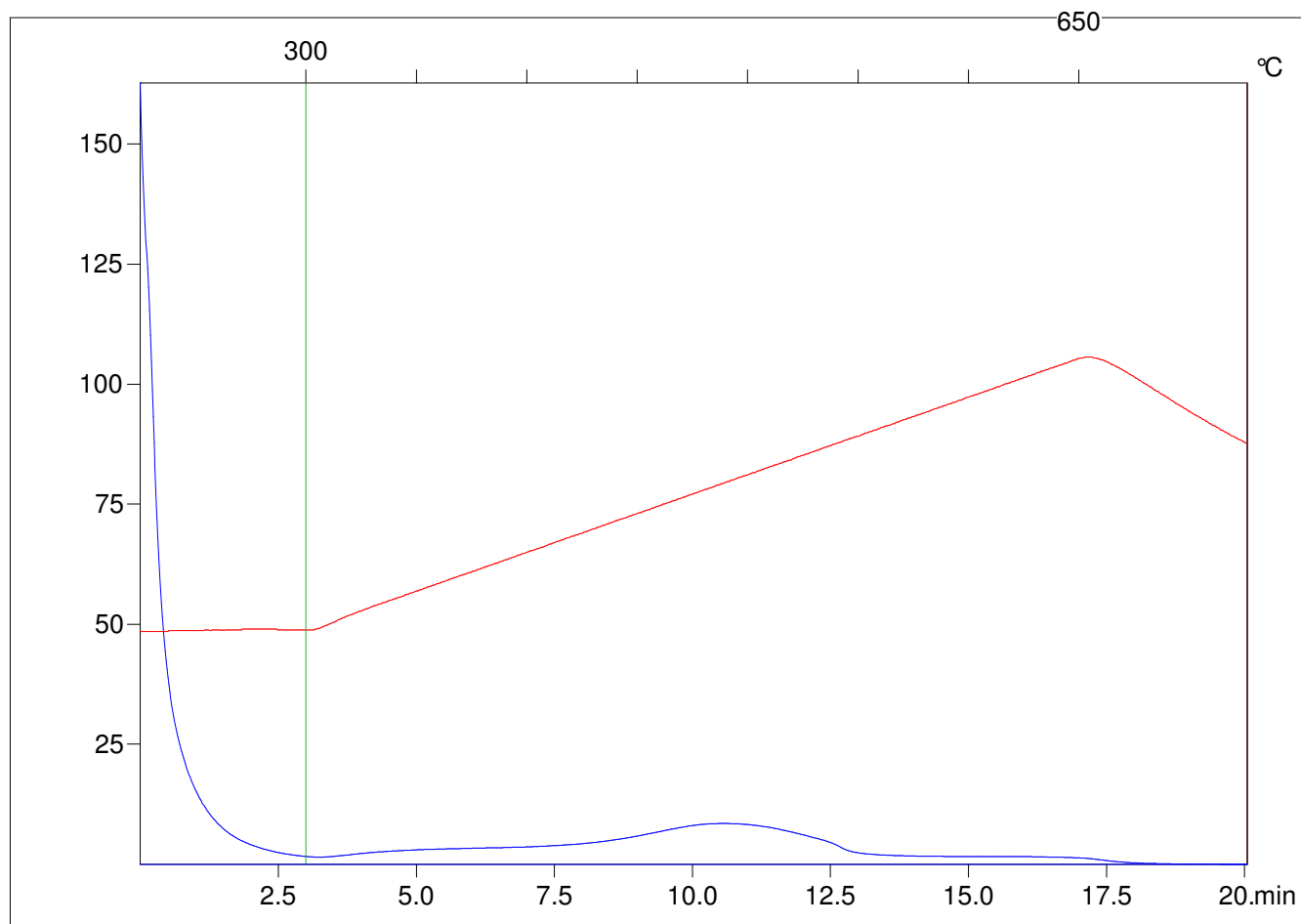
Method =Bulk Rock

Cycle=Basic

KFID(10\*9)=1444

Qty =70.0

TOC=5.74



C:\VINC\PK3\_1792\PK040.R00 : FID pyrolysis graphic

State

Pyro Status

Oxi Status